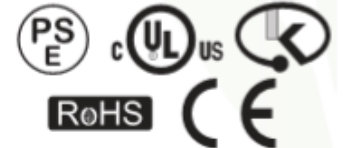
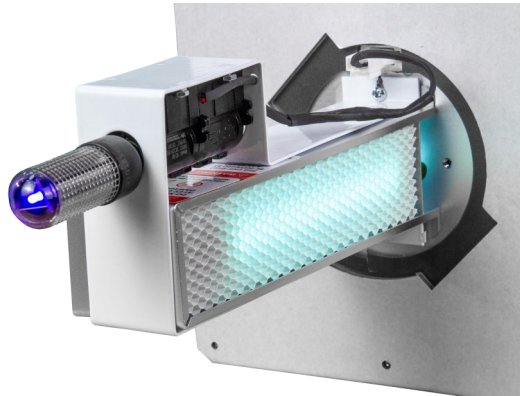


RESIDENTIAL



COMMERCIAL



ENGINEERING SPECIFICATIONS

The HVAC mounted MCI™ SynAIRgPure 2.0 is designed as the first fully customizable probe to provide the power you need for any environment. The probe produces aggressive ionized oxidizers (without producing ozone) and trademarked MCI™ multi-cluster ions that are then distributed throughout the indoor environment cleaning both the internal HVAC equipment, ductwork and, ultimately the air and surfaces indoors.

This trademarked MCI™ Multi-Cluster Ionization technology uses an enhanced output PCO (UV photocatalytic oxidation with enhanced quad-metallic coatings) and can be supercharged with the addition of the patented dielectric barrier ionizer to increase its cleaning power to reduce microbials, particulates and VOCs. The synergistic combination of effective components is the key to its operation.

**WARRANTY**

UV lamp and DBI Cells should be replaced, by enduser, as scheduled but the quad-metallic target plate is warranted for the life of the probe against manufacturer defects. The ballast carries a 3-year limited warranty. End-user may purchase enhanced warranty for lifetime warranty at [www.BLSWarranty.com](http://www.BLSWarranty.com)

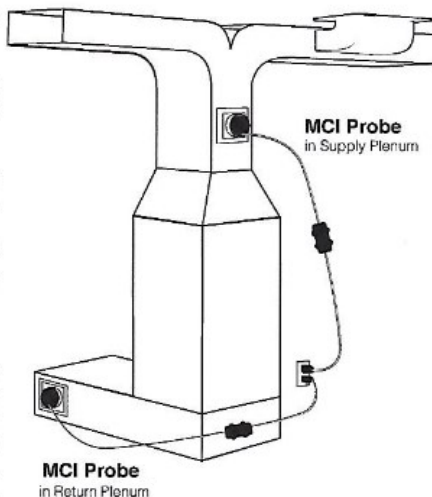
**OZONE Optional**

MCI™ Multi-Cluster Ionization technology is so effective that it does not require ozone to reach efficacy. Ozone producing UV lamps are an optional upgrade.

**INSTALLATION**

A single probe is installed in the return plenum and an additional probe installed in the supply plenum sized to match the HVAC equipment coverage area. This dual installation provides cleaning power to the internal equipment and the downstream duct system reducing microbials and other contaminants. The probe in the return air plenum eliminates the need for germicidal lamps shining on the evaporator coils.

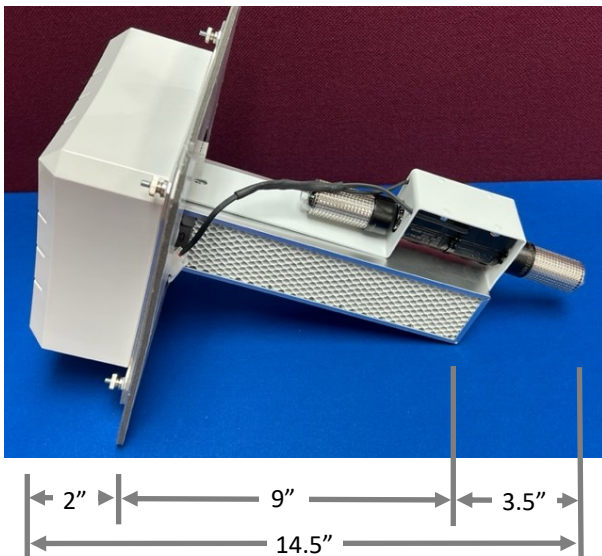
DUAL INSTALLATION



REPLACEMENT PARTS

PART	REPLACEMENT CYCLE	PART NUMBER
25,000 hour NO OZONE UV Lamp	1-2 Years	BLS2538569
Dielectric Barrier Ionizer	Three Years	BLS255685
Quad-Metallic Target Plate	Lifetime	BLS2569300
12 Volt Inverter Power Cord	Lifetime	BLS85988652
Probe Ballast	3 Year Limited	BLS544658902a

SIZING CHART	Application	Recommended	Technology	Shipping Weight	Length
	1-3 tons air handler	MCI™ SynAIRgPure16K	Enhanced PCO	2.8lbs 1.27kg	9"
	3-5 tons air handler	MCI™ SynAIRgPure24K	Enhanced PCO w/single DBI cell	3.2lbs 1.45kg	9"
	5-10 tons air handler	MCI™ SynAIRgPure40K	Enhanced PCO w/double DBI cell	3.6lbs 1.63kg	13"
	400cfm-1200cfm airflow	MCI™ SynAIRgPure16K	Enhanced PCO	2.8lbs 1.27kg	9"
	1200cfm-2000cfm airflow	MCI™ SynAIRgPure24K	Enhanced PCO w/single DBI cell	3.2lbs 1.45kg	9"
	2000cfm-4000cfm airflow	MCI™ SynAIRgPure40K	Enhanced PCO w/double DBI cell	3.6lbs 1.63kg	13"
	16,000 cubic feet living space	MCI™ SynAIRgPure16K	Enhanced PCO	2.8lbs 1.27kg	9"
	24,000 cubic feet living space	MCI™ SynAIRgPure24K	Enhanced PCO w/single DBI cell	3.2lbs 1.45kg	9"
	40,000 cubic feet living space	MCI™ SynAIRgPure40K	Enhanced PCO w/double DBI cell	3.6lbs 1.63kg	13"
	Return plenum	MCI™ SynAIRgPure16K	Enhanced PCO	2.8lbs 1.27kg	9"



9"x9" OD



\* SIZING CONSIDERATIONS

\*MCI™ SynAIRgPure 2.0 is effective against a wide range of contaminants in both the air and on surfaces. This technology does not replace the need for or replacement of any regularly scheduled cleaning maintenance. However, these factors should be considered when properly sizing the product to an indoor living environment:

* Number of Occupants	* Pets or Animals	* Landscape Features
* Carpeting vs. Tile vs. Wood Flooring	* Leather vs. Fabric Furniture	* Draperies
* Air Flow and Ventilation	* Placement of Supply Registers	* Number and Placement of Return Registers
* Recent Renovations or Additions	* Use of the Building (Commercial/Residential)	* Majority Age of Occupants
* Air Infiltration Concerns	* Nature of the Contents	* Building Use by Hours
* Cleaning Schedule and Maintenance	* Turnover Traffic Level	* Type of Ductwork